



Belleville Police Service
Annual Report
2008

Table of Content

<i>Chief of Police Comments</i>	3
<i>Vision, Mission and Guiding Principles</i>	4
<i>Belleville Police Service – Organization Charts</i>	5
<i>Executive Summary</i>	7
<i>2008 Operating Budget</i>	8
<i>Total Crime Incidents</i>	9
<i>Total Charges Laid 2008</i>	10
<i>Offender/Gender Relations</i>	12
<i>Individual Call Types</i>	13
<i>Criminal Code Driving Offences</i>	16
<i>Annual Highway Traffic Act Charge Activity</i>	17
<i>Annual Partner Assaults Summary</i>	19
<i>Stats Canada Totals</i>	24
<i>2008 Public Complaint Statistics</i>	24
<i>Auxiliary Constable Program</i>	25
<i>Community Policing</i>	25
<i>Project “LONGARM”</i>	26
<i>Belleville Police Service Staff 2008</i>	27
<i>Dedication - Cst Mike Eby</i>	29

Chief of Police Comments

Chief Cory L. McMullan

I am pleased to present to the Belleville Police Service Board and to the citizens of Belleville the 2008 Annual Report. I wish to acknowledge the strong leadership provided by Chief Stephen Tanner and Deputy Chief Brian Harder throughout 2008. The year ended with the departure of Chief Stephen Tanner who accepted the position of Chief with the Kingston Police Service.

The men and women of the Belleville Police Service continue to serve the community with distinction and their commitment to the community was evident throughout the year.

Maintaining a balance of public expectations with responsible fiscal management while maximizing our capacity to deliver mandated services, will continue to bring both challenges and opportunities. I look forward to our future and hope to share with you many more successes as we strive to make the City of Belleville the safest community possible.

Belleville Police Services Board

Each municipality maintaining a police service is required through legislation to establish a structure, known as a Police Services Board, to provide governance and accountability. The Belleville Police Services Board consists of five members including two provincial, two municipal and one community appointee:

The Police Services Board is the legal entity and authority for the Service and is ultimately accountable for the proper conduct of the organization's business. The Belleville Police Services Board, generally after consultation with the Chief of Police, assumes the role of policy direction and administration of policing in the community in part by developing the Business Plan determining general organizational objectives, priorities and establishing policy.

2008 Belleville Police Services Board Members:

Chair of Board - Ted Rutter

Vice Chair of Board - Jack Miller

Members:

Neil Ellis

Rick Wallace

Frank Chapman

Board Secretary:

Shirley Davis

VISION

- **To be recognized by our community and members as the best, most professional and progressive police service.**

MISSION

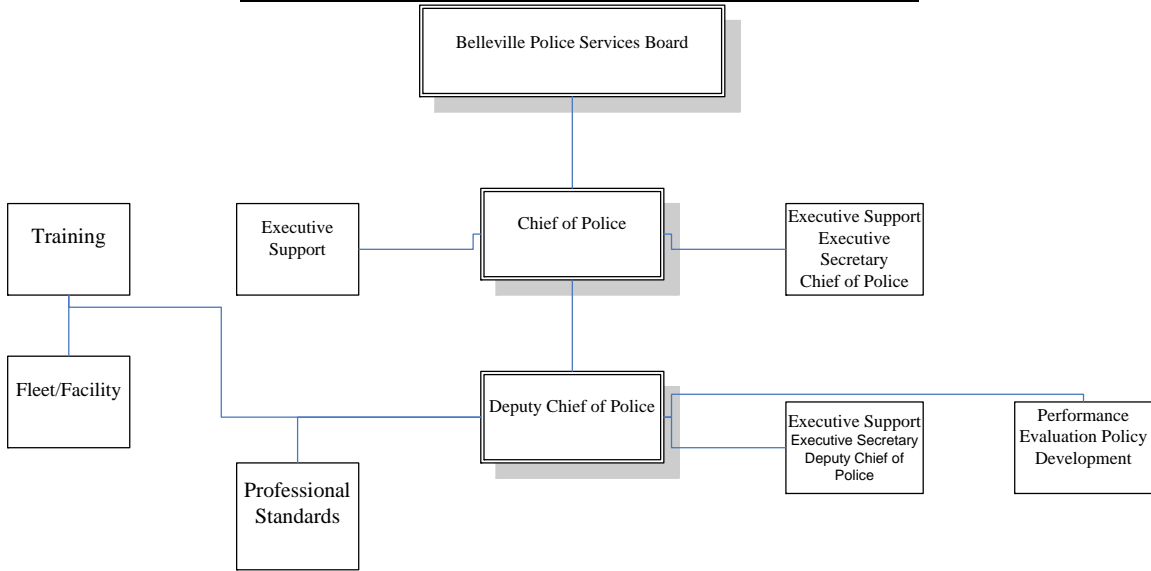
- **In partnership with our community all members will serve, protect and enforce laws fairly to enhance the quality of life of all citizens.**

GUIDING PRINCIPLES

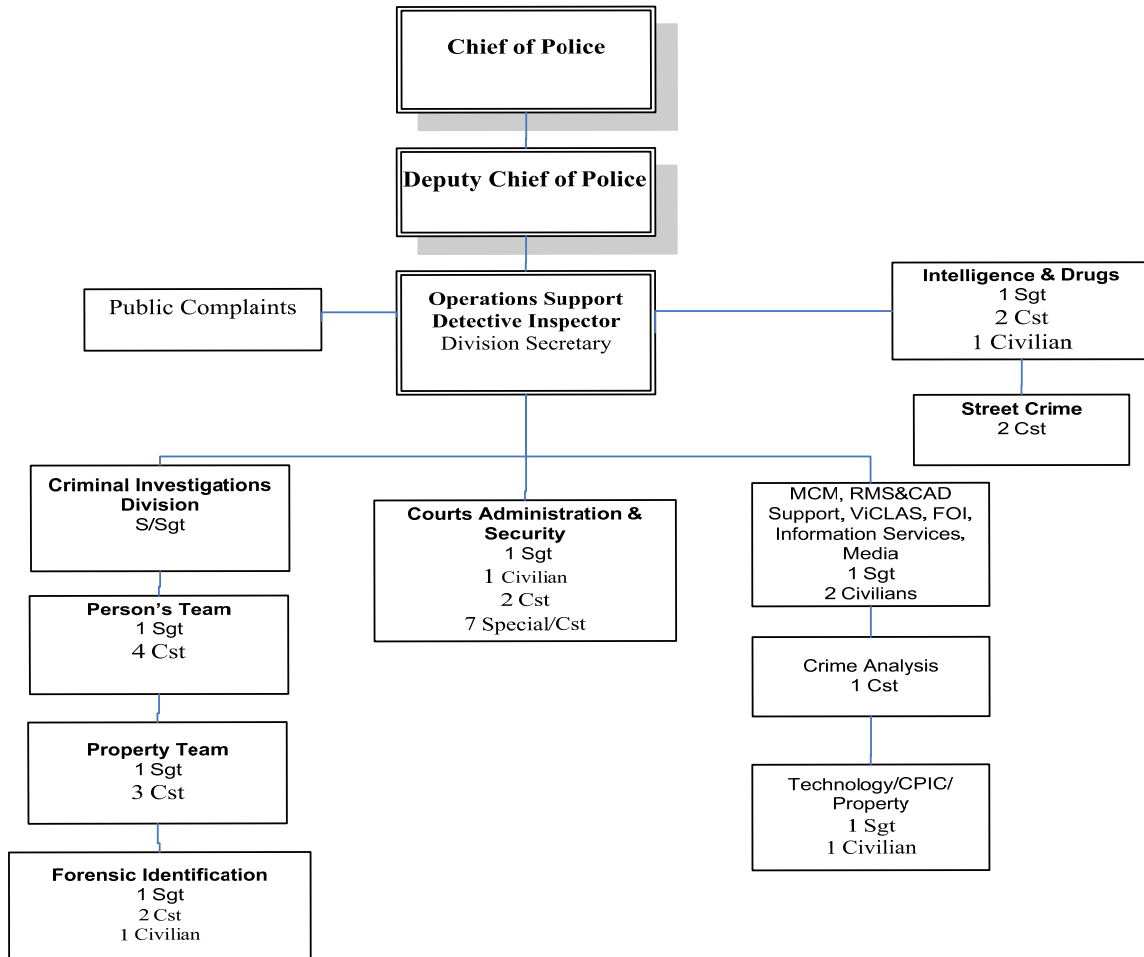
In pursuit of our mission, we believe in:

- **The prevention and detection of crimes and the relentless pursuit of offenders.**
- **In working in partnership with our community.**
- **Providing the highest quality of service possible.**
- **Recognizing the efforts and contributions of our members, volunteers and community partners.**
- **The value of all members and in providing both personal and professional support.**
- **Fostering a work environment which pursues excellence, open communication, trust and teamwork.**
- **In being sensitive to the needs of victims of crime and other circumstances.**
- **In a commitment to continuous learning, improvement and innovation.**
- **In the right of all individuals to be treated with dignity and respect.**
- **Making our community the safest possible in which to live, work and play.**

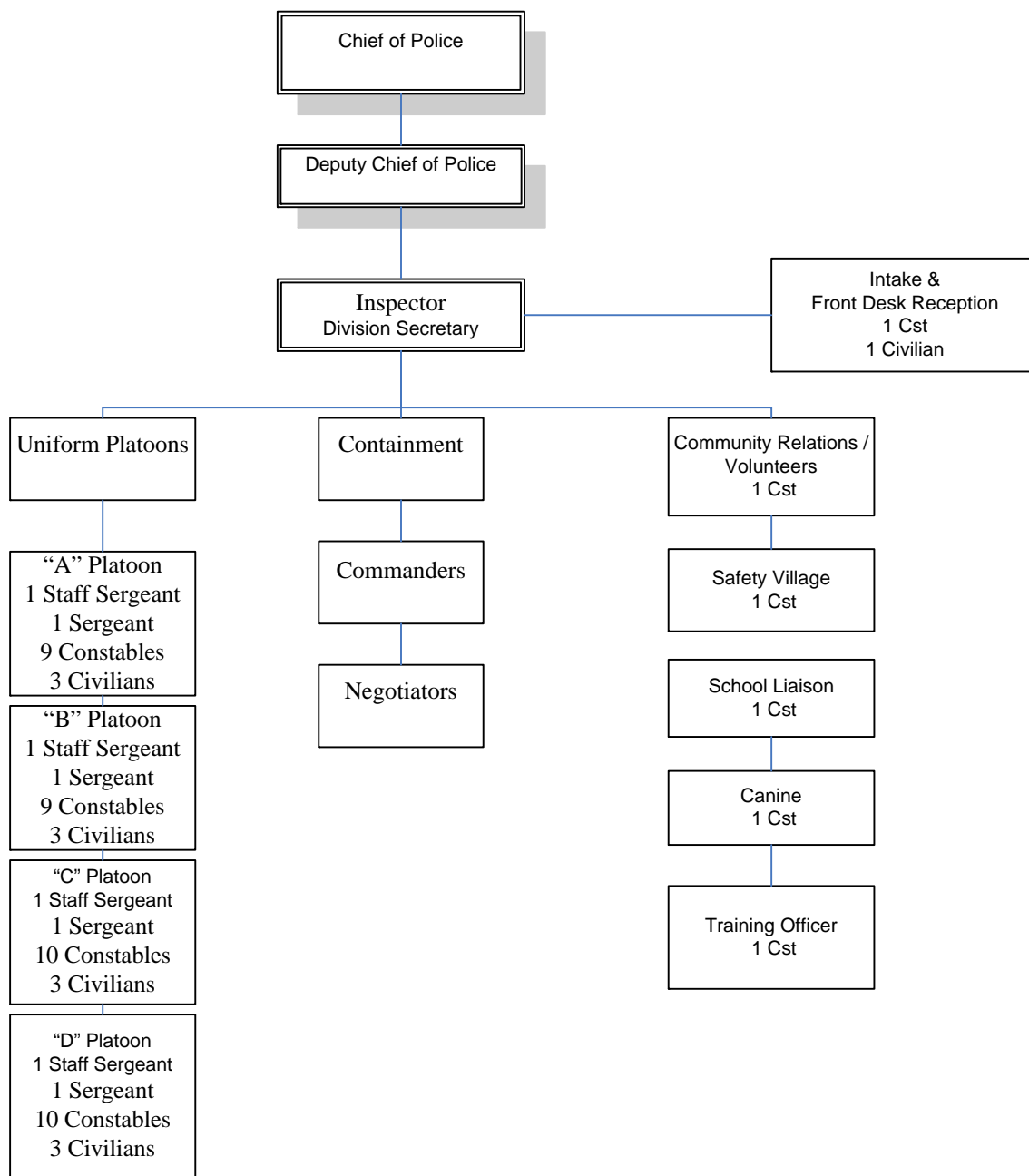
Belleville Police Service – Executive Services 2008



Belleville Police Service – Operations Support Division 2008



Belleville Police Service – Operations Division 2008



Executive Summary Annual Report – 2008

The 2008 Annual statistical report summarizes data for the entire year.

Graphs are included to summarize statistics relating to: Total Incidents, Annual Incidents Cleared by Charge, Offender / Gender Relations, Individual Call Types and Highway Traffic Act Charge Activity.

Overview

- 23,982 incidents (crime & non crime) were reported to the Belleville Police Service during 2008. (Increase of 3% over 2007)
- The total Annual number of Stats Canada (crime) incidents (Actual) in 2008 was 8414 a 4% increase from 8110 in 2007. The total number crime incidents Police responded to in 2008 was 9099 with 685 of these being deemed as unfounded
- The number of crime incidents Cleared Otherwise in 2008 was 2035 and incidents Cleared by Charge was 2697
- There was a 56% Clearance Rate for Crime Stats in 2008

Total Charges Laid

- There were a total of 8176 (Federal and Provincial statutes) charges laid in 2008.
- 58% of all charges were Highway Traffic Act offences.
- 32 % were Criminal Code offences.

Annual Offender/Gender Relations

- 8176 total charges laid in the past year 67% were laid against Adult Males, 7% were laid against Young Offender Males, 24% were laid against Adult Females and 2% were laid against Young Offender Females.
- Males accounted for 74% of all the persons charged.

Criminal Code Driving Offences

- There were 237 Criminal Code driving offence charges laid during 2008. (Less than 1% decrease from 2007).

Annual Highway Traffic Act Charge Activity

- Highway Traffic Act Charges decreased by 36% in 2008 from 2007.
- Speeding represents 53% of all HTA charges laid.
- MVC's have decreased less than 1% from 2008 to 2007.

2008 Operating Budget

Staffing costs and compensation (90%) includes all salaries, benefits, pensions, retirement incentives and payouts.

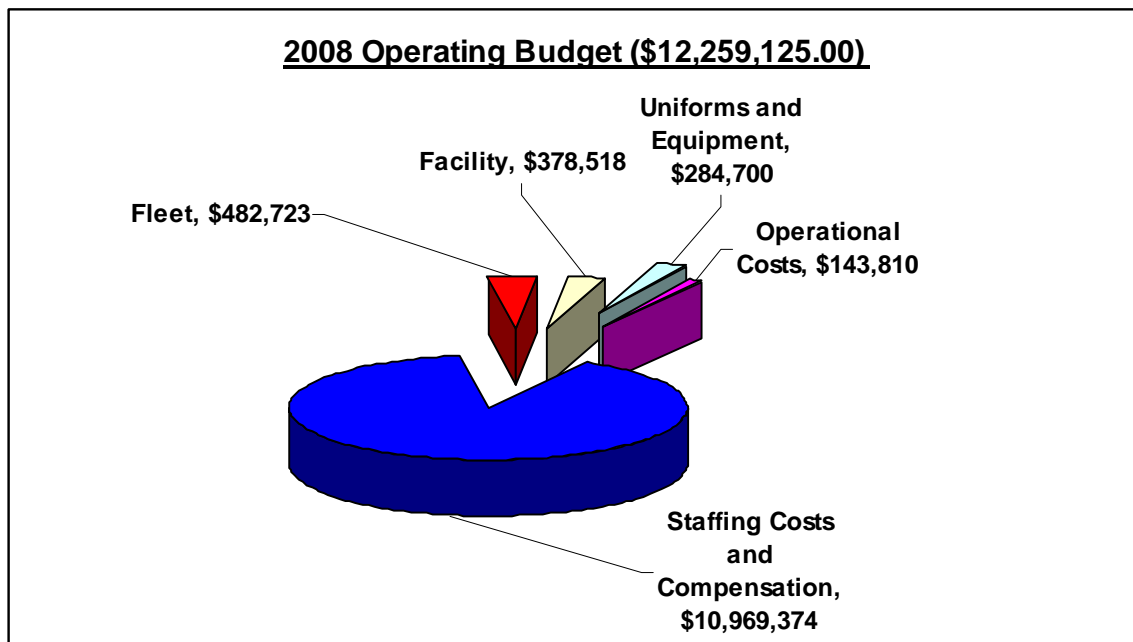
Fleet (4%) includes all vehicle maintenance, fuel, annual vehicle purchases and leases.

Facility (3%) includes heat, hydro, building insurance, caretaking and maintenance expenses, telephones, computer equipment, records management system.

Uniforms and equipment (2%) includes ammunition, cleaning and clothing allowances, radio equipment, cellular telephones, pagers, investigative expenses, radar and breathalyzer.

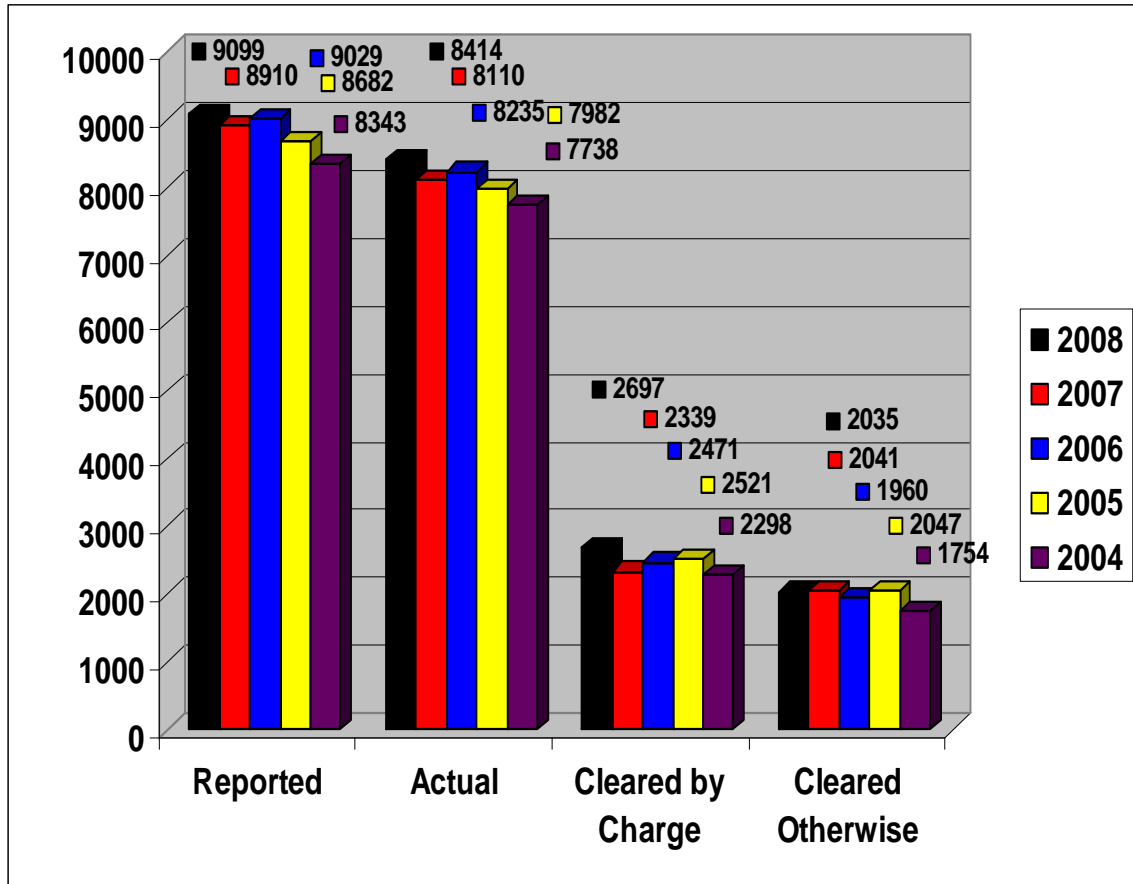
Operational costs (1%) include all travel and training, prisoners' meals and escorts, professional membership fees, office stationary and supplies, legal expenses.

In addition, actual revenue for 2008 totalled \$740,275 for prisoner transportation subsidy, police record checks and insurance reports, Community Policing Partnership, RIDE and Safer Communities grants, dispatch fees, by-law licensing fees (Adult Entertainment and Alarms), police secondments, and POA cost offset.



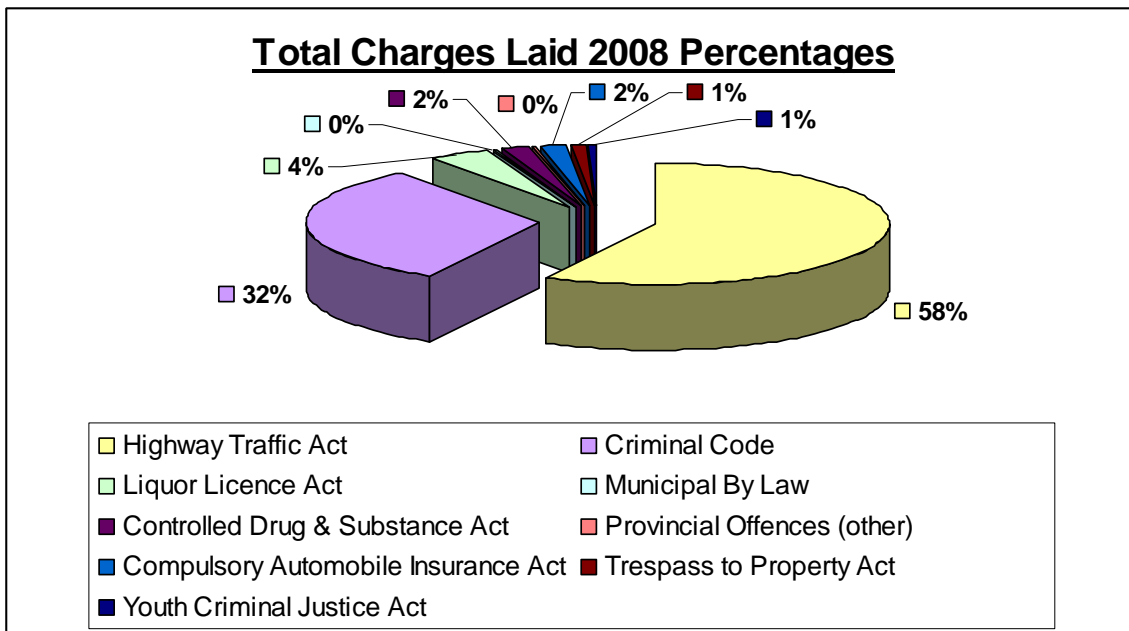
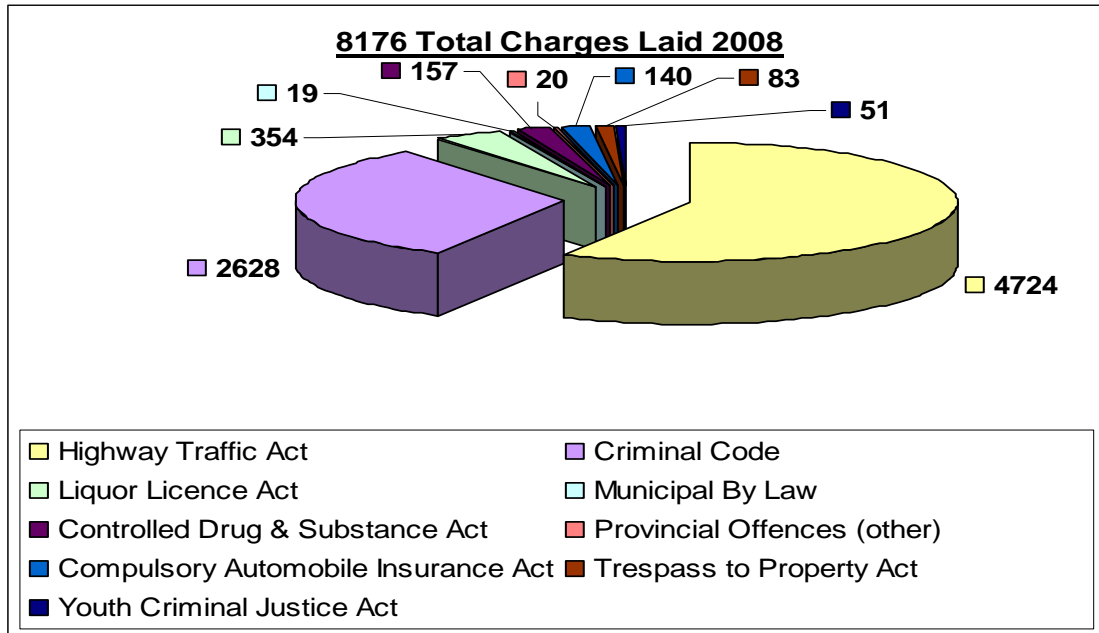
Total Crime Incidents

- The total Annual number of Stats Canada (crime) incidents (Actual) in 2008 was 8414 a 4% increase from 8110 in 2007.
- The number of crime incidents Cleared Otherwise in 2008 was 2697 and incidents Cleared by Charge was 2035
- There was a 56% Clearance Rate for Crime Stats in 2008



Total Charges Laid 2008

- There were a total of 8176 (Federal and Provincial statutes) charges laid in 2008. The highest percentage of charges were laid under the Highway Traffic at 58% with the next highest under the Criminal Code at 32%.



Total Charges Laid

- Total Charges laid by the Belleville Police Service in 2008 was 8176.

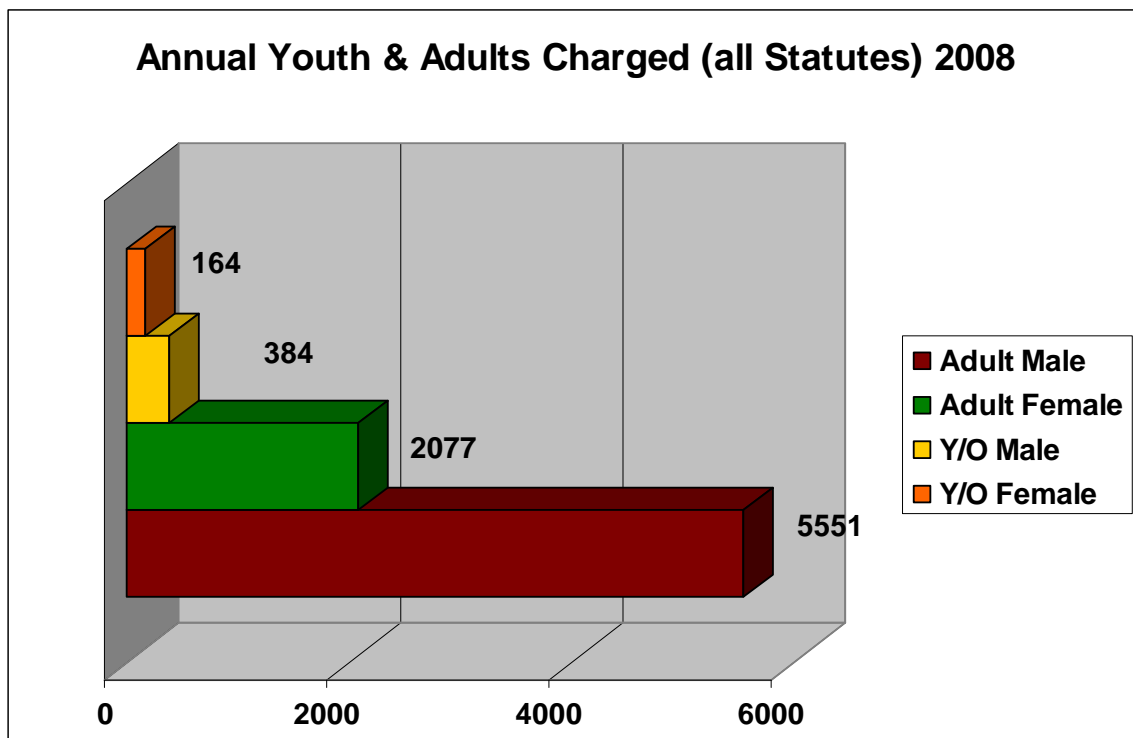
Males:	Adults	5551	Females:	Adults	2077
	Youths	384		Youths	164
	Total:	5935		Total:	2241

Criminal Code Charges Total	2628
Controlled Drug & Substance Act	157
Youth Criminal Justice Act	51
Highway Traffic Act	4724
Trespass to Property Act	83
Liquor Control Act	354
Municipal By Laws	19
Compulsory Automobile Insurance Act	140
Provincial Offences Act	20

Belleville Police Service Charges Laid 2008 Total:	8176
---	-------------

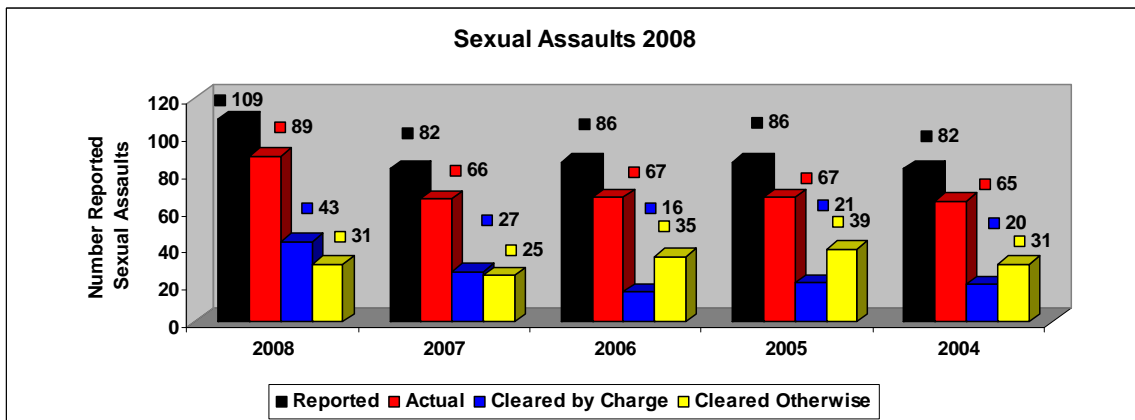
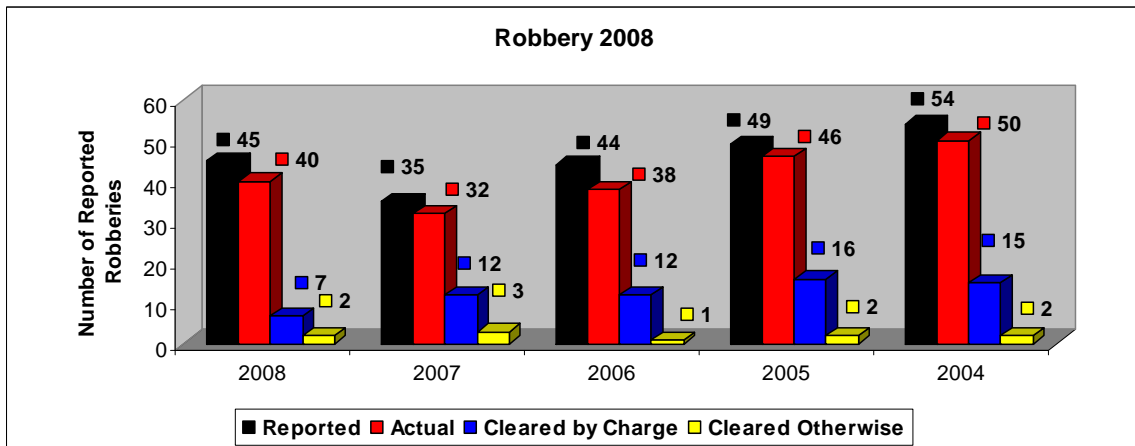
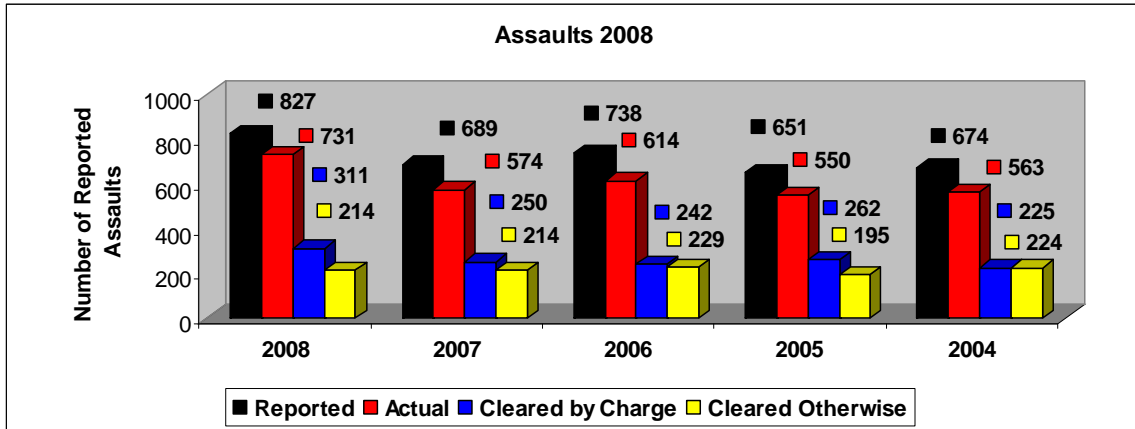
Offender/Gender Relations

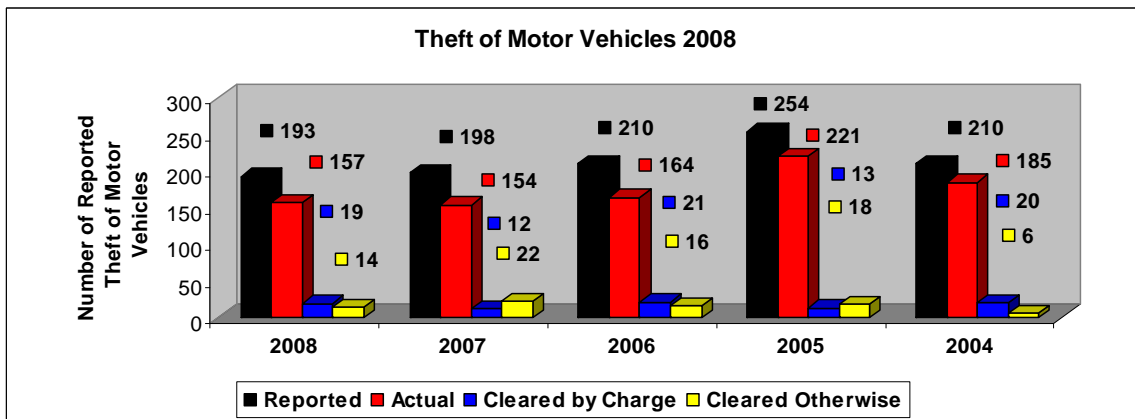
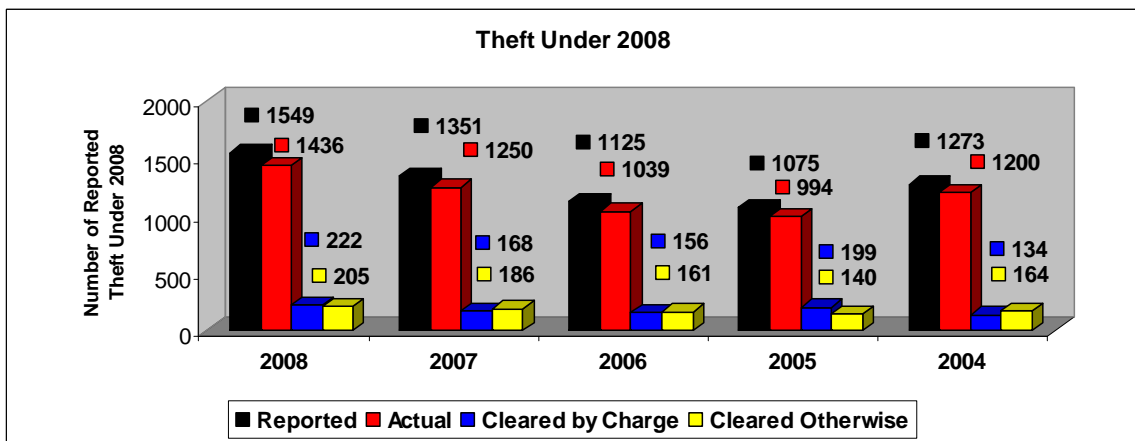
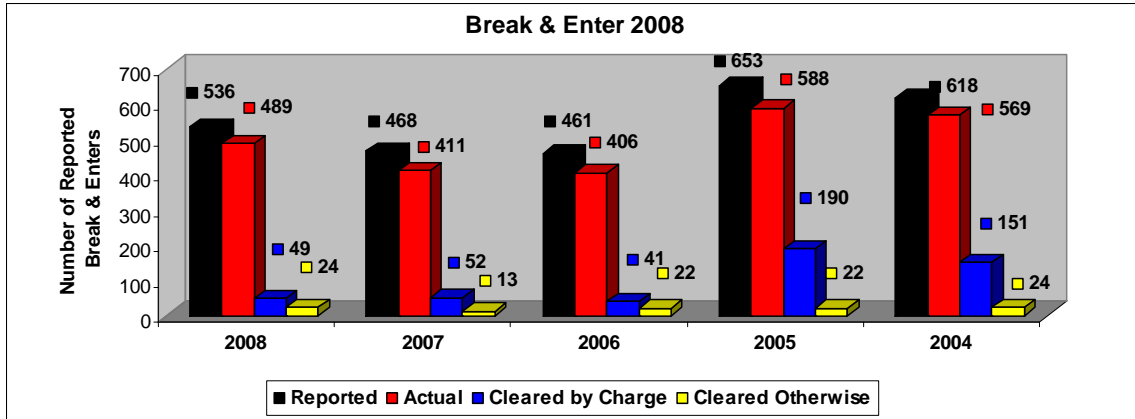
- The data in this graph indicates that of the 8176 total charges laid in the past year 68% were laid against Adult Males, 5% were laid against Young Offender Males, 25% were laid against Adult Females and 2% were laid against Young Offender Females.
- Males accounted for 73% of all the persons charged.

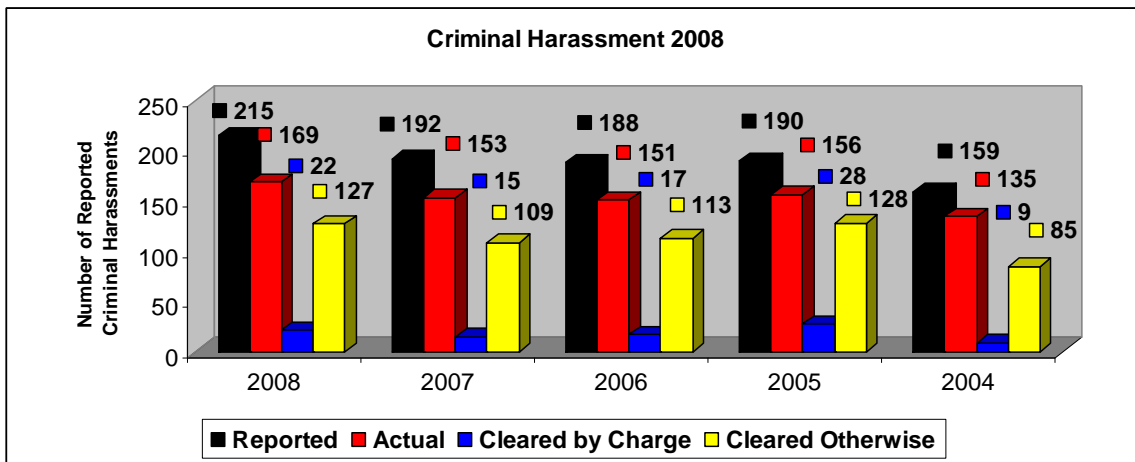
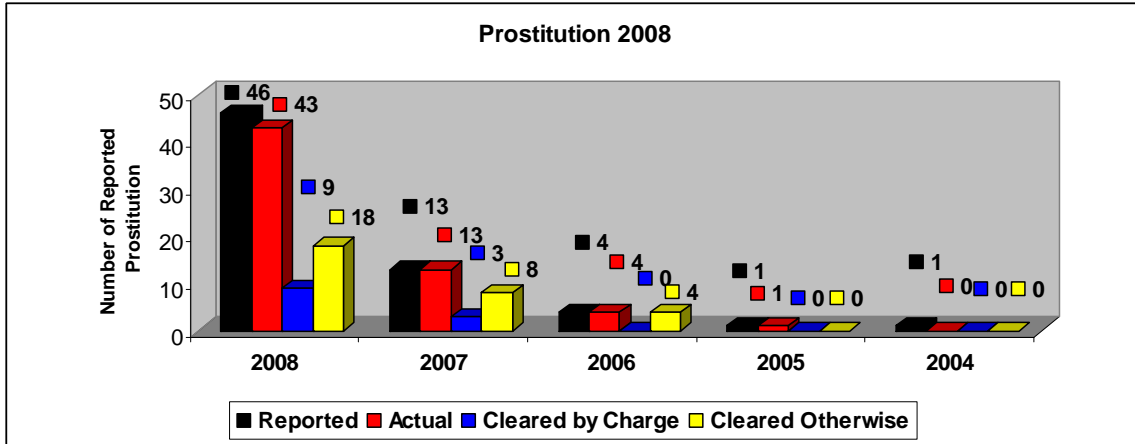


Individual Call Types

- The graphs in this section represent the most prevalent types of calls dealt with by this Service, or areas have shown a significant increase or decrease in their figures.

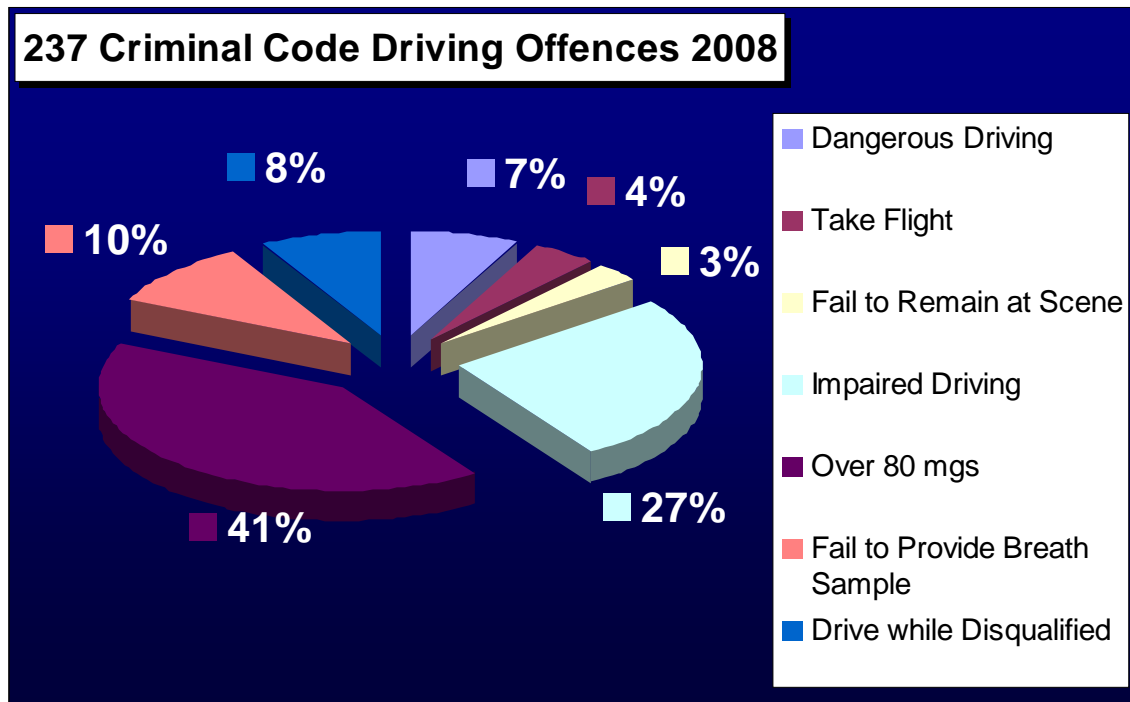






Criminal Code Driving Offences

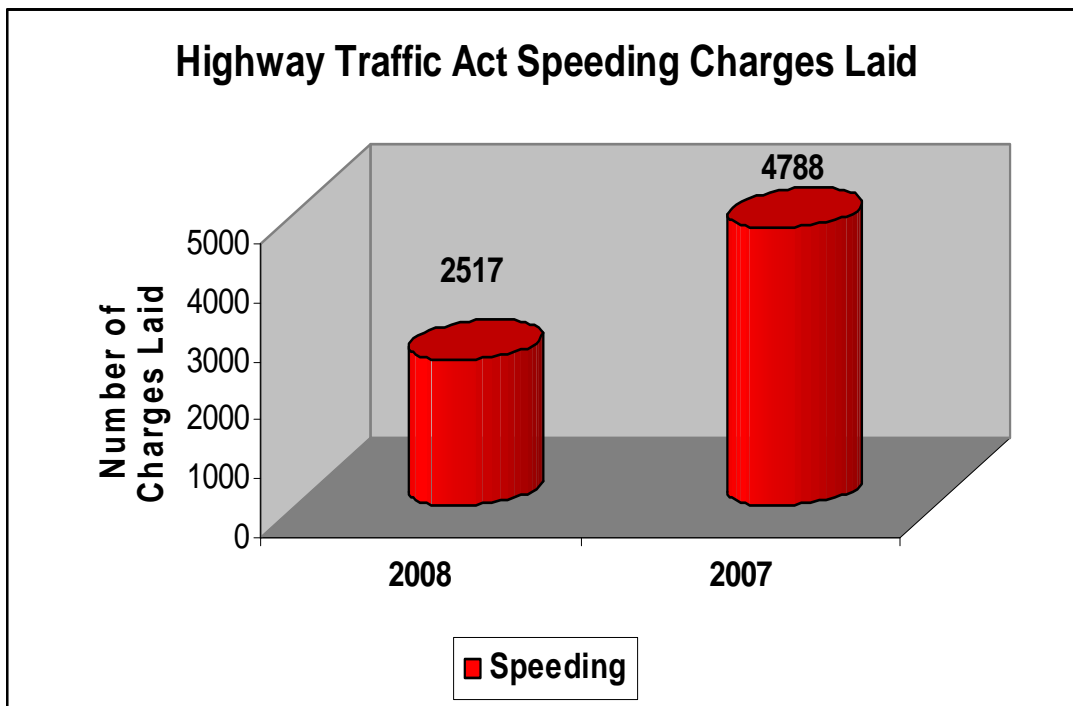
- There were 237 Criminal Code driving offence charges laid during 2008. This is a 29% decrease from 2007.



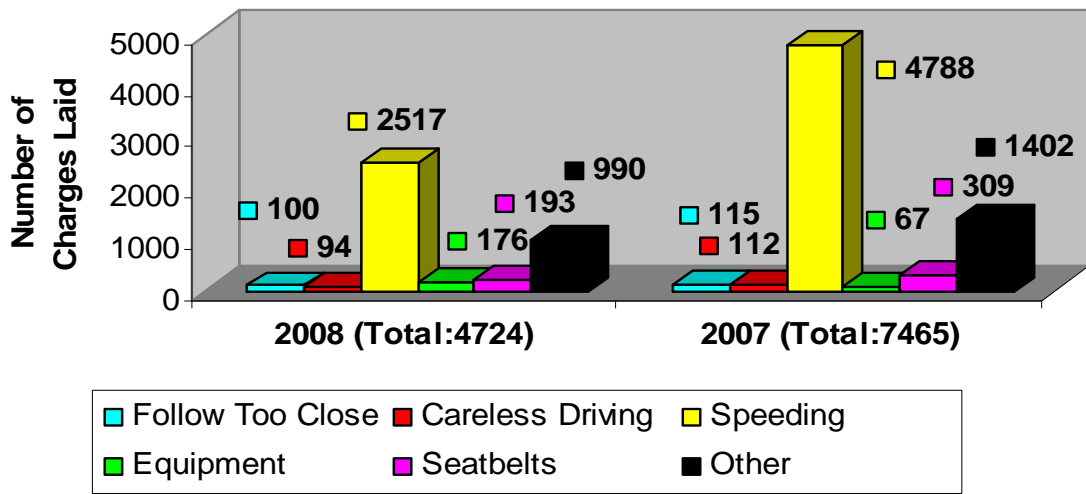
Criminal Code Driving Offences 2008 vs. 2007		
Driving Offence	2008	2007
Dangerous Driving	17	9
Take Flight	10	5
Fail to Remain at Scene	7	3
Impaired Driving	63	80
Over 80 mgs.	97	203
Refuse/Fail to Provide Breath Sample	24	16
Drive While Disqualified/Prohibited	19	20
Total	237	336

Annual Highway Traffic Act Charge Activity

- Highway Traffic Act Charges decreased by 36% in 2008 from 2007
- Speeding represents almost half of all HTA charges laid at 53%.
- MVC's decreased of less than 1% in 2008 from 2007.



Highway Traffic Act Charges 2008



Motor Vehicle Collisions 2008	2008	2007	2006
MVC Personal Injury	93	152	193
MVC Property Damage- non reportable	189	172	145
MVC Property Damage- reportable	913	851	778
MVC Property Damage- fail to remain	187	169	126
MVC Personal Injury- fail to remain	9	11	21
MVC Other	127	135	108
MVC Fatality	2	1	3
Total	1520	1491	1374

Annual Partner Assaults Summary 2008

The following data represents a comparison between the annual reports of 2008, 2007, and 2006, relating to Partner Assault activity in the City of Belleville. This information is valuable from a local perspective as it helps us to understand the extent of reported partner assault and existing trends in this area within the City of Belleville.

Definition

According to the Ministry of the Solicitor General, Partner Assault included (but is not limited to):

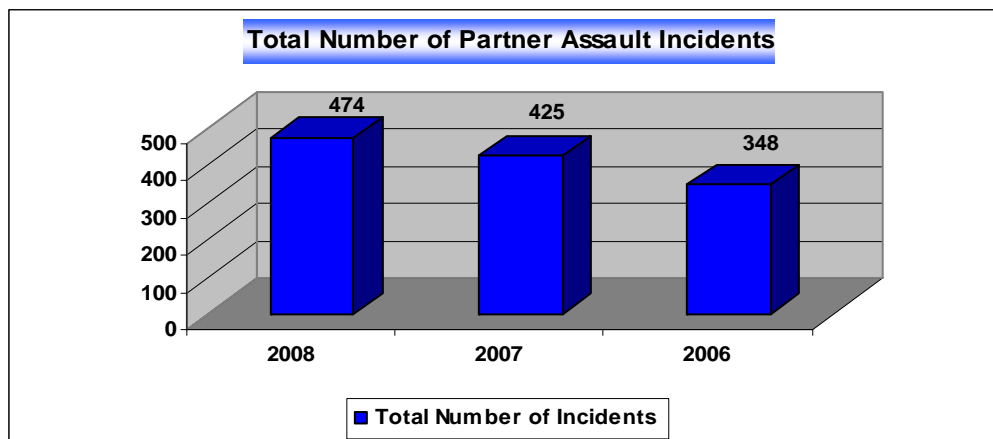
- Physical Assault
- Sexual Assault
- Criminal Harassment
- Intimidation
- Threats of Physical Assault

These actions must be directed by a person towards his/her partner with whom there is or has been an intimate relationship (whether or not the relationship has received legal sanction as a marriage).

This includes long-term intimate relationships, whether or not they have lived together or are currently living together. It also includes same-sex relationships. (This does not include casual relationships or acquaintances.)

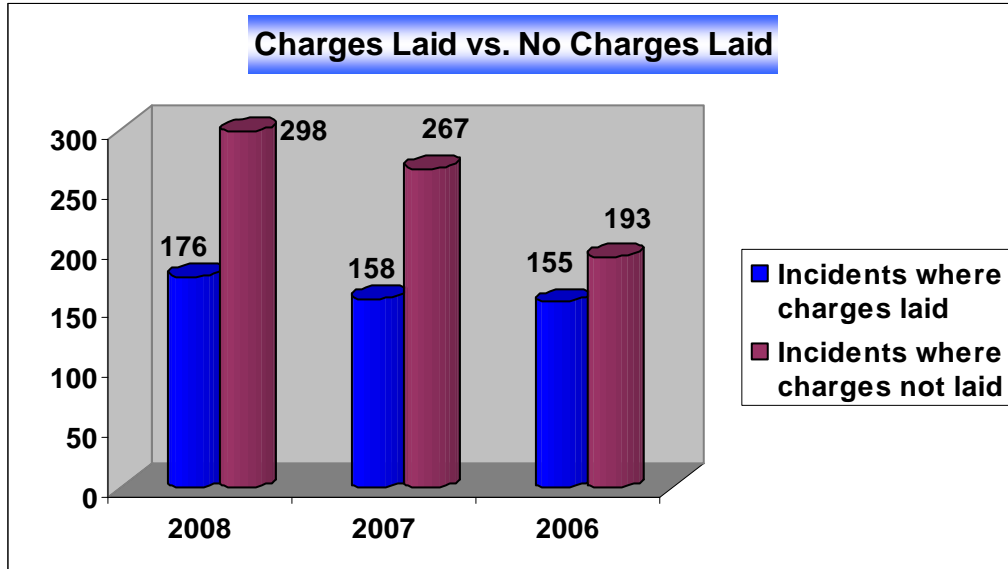
Total Partner Assault Incidents 2008

- At the end of 2008, 474 incidents involving Partner Assault had been investigated. This is a 12% increase from 2007.



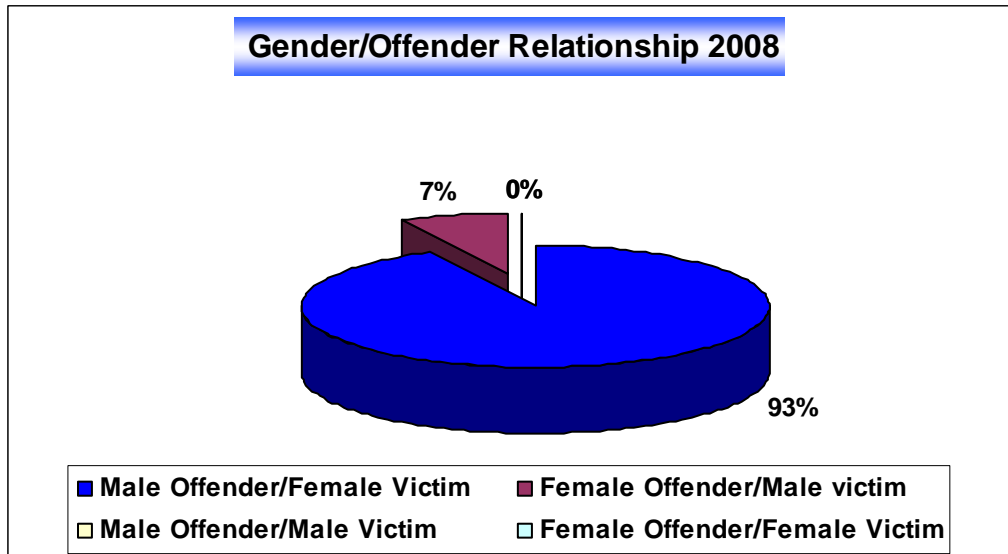
Charges vs. No Charge Laid

- Charges were laid in approximately 37% of the Domestic incidents that had been investigated in 2008. (During 2007, that number was same at 37 %.)



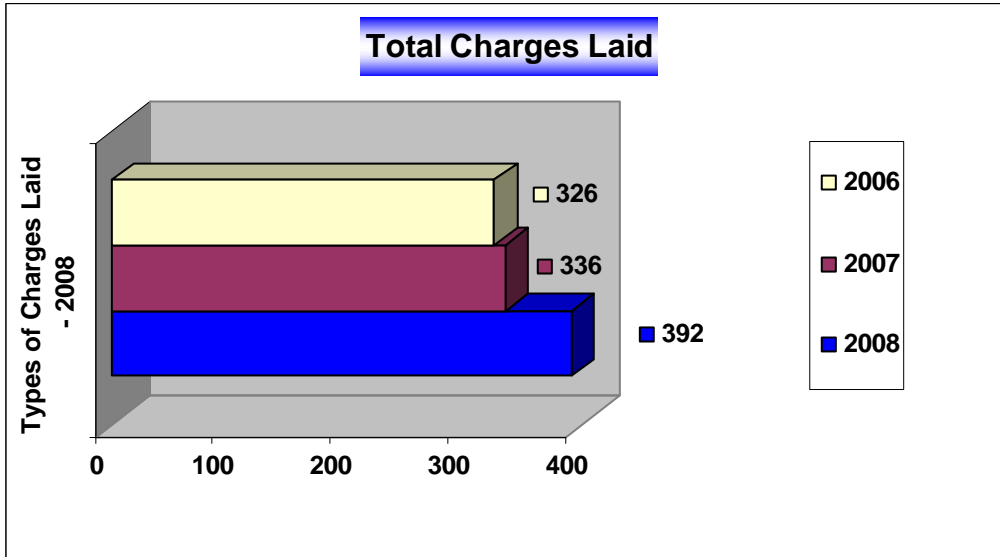
Offender/Gender Relationship

- Same sex relationship reporting has remained the same (0%) over the same time period in 2007.



Total Charges Laid

- There was a 17% increase in the total number of charges laid at the conclusion of the fourth quarter of 2008 from the fourth quarter of 2007.

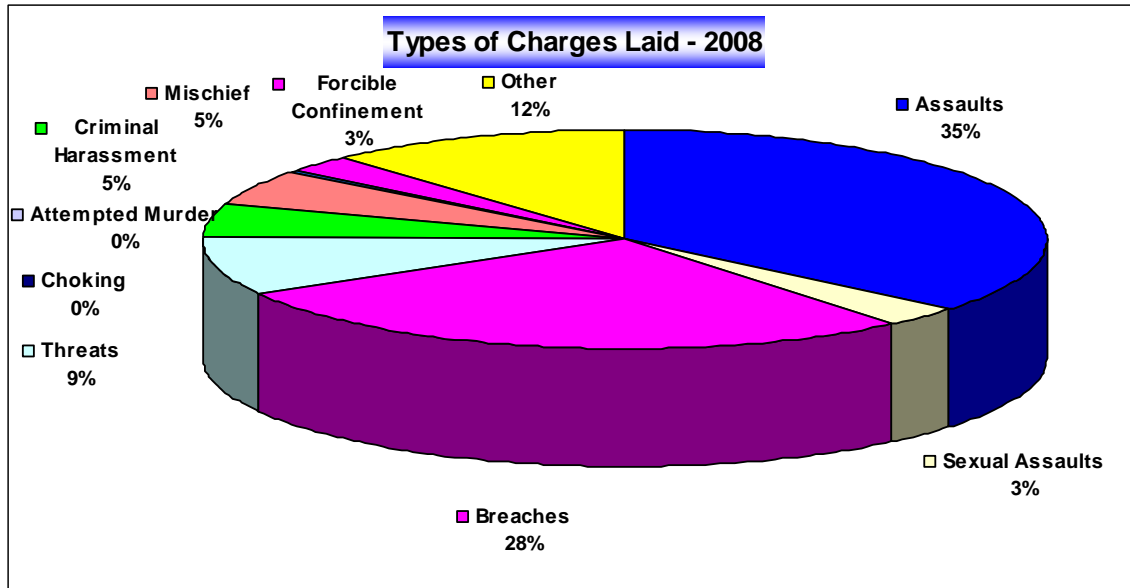


CHARGE TYPES

The charges laid at the end of the fourth quarters of 2008:

- Assault
- Sexual Assault
- Breaches
- Threats
- Criminal Harassment
- Intimidation
- Theft
- Mischief
- Forcible Confinement
- Other Offences

The most prevalent charge laid by police in partner assault incidents was Assaults. This constitutes approximately 35% of all the charges laid in 2008 and 43% in 2007.

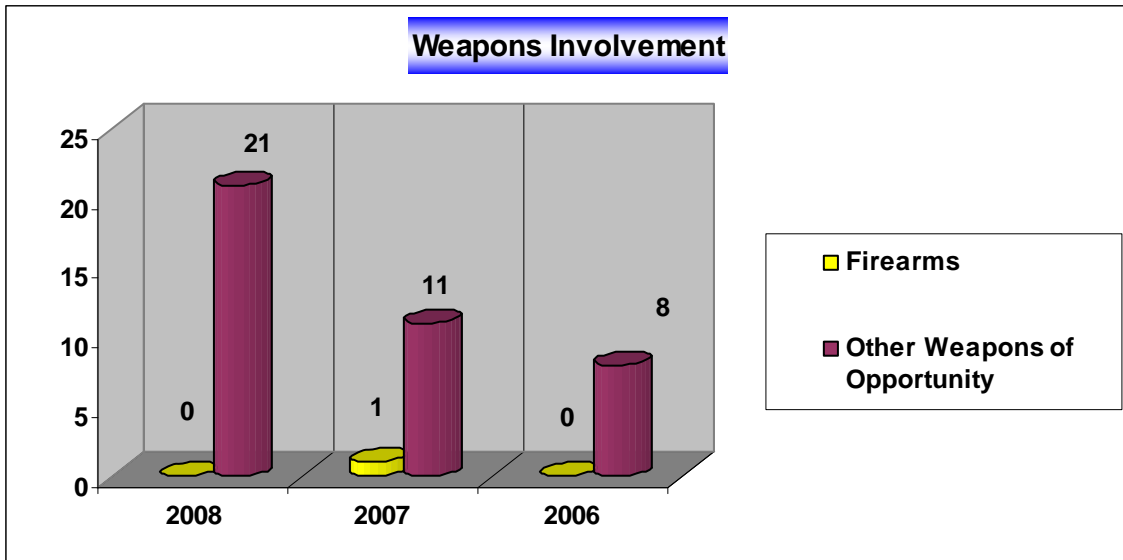


- The number of charges at the end 2008 increased from 2007 and noticeably a 37% increase in charges related to Breaches such as Breach of Probation and Fail to Comply laid during this same time period.
- The charges in the Other category included:
Unlawfully in a Dwelling, Assault Police, Pointing Firearm, Unlawful Possession of a Firearm, Choking, Impaired Driving, Trespass by Night, and Break & Enter.

Weapons Involvement

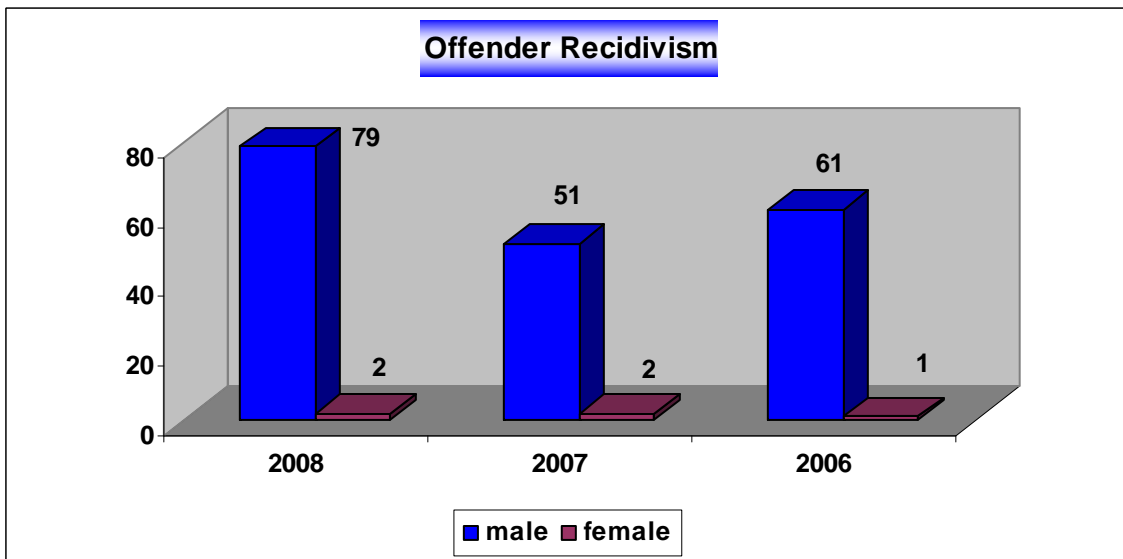
- The number of partner assaults involving weapons increased by 50% from 2008 over 2007.

(Note: The weapons involved included video camera, scissors, tire iron, glass, pillow, rope, battery, knives, coffee table, shovel, phone, plates)



Offender Recidivism

The recidivist rate in 2008 is 46%, with males being the primary repeat offenders.



Stats Canada Totals

BELLEVILLE POLICE SERVICE (Stats Canada) TOTALS

Year	Reported	Actual #	Unfounded	Clearing CHG	Summary C/O	Clearance
2008	9099	8414	685	2697	2035	56%
2007	8910	8110	800	2339	2041	54%
2006	9029	8235	794	2471	1960	54%
2005	8682	7982	699	2521	2047	57%
2004	8343	7738	605	2298	1754	52%
2003	8374	7738	639	2315	1676	52%
2002	8636	8028	608	2769	2127	61%
2001	8934	8510	424	2135	1917	48%
2000	8408	7909	499	1837	2161	51%

2008 Public Complaint Statistics

There were fourteen public complaints in 2008, a decrease of five from 2007. Public complaints are classified as officer conduct, service or policy based. All fourteen complaints were regarding the conduct of members. Of the fourteen complaints, one was classified as neglect of duty, nine as discreditable conduct, one as excessive use of force and three were classified as exercise of authority. Five complaints were withdrawn, two were unsubstantiated, four resulted in informal discipline and three are pending further investigation.

2008 Auxiliary Constable Program

The Belleville Police Service has had an active Auxiliary Police Constable Program for over 20 years, the Auxiliary Constables has been an asset for the Belleville Police Service and another positive example of the Community working in partnership with the Police to make our communities safer.

The Belleville Police Service utilizes the Auxiliary Constables in a variety of tasks to maximize the potential of the program and to assist Belleville Police Service in meeting operational needs and community partnerships. Throughout 2008 Auxiliary Constables assisted with the following programs: Water Front Festival, Car Seat Clinics, Santa Claus Parade, Big Music Fest, Uniform Patrols, Thurlow Flood Assistance, Missing Person Search, Spring Auction, Criminal Record Checks, Canada Day, Special Olympics, OHL Big Ticket Night, Fishing Derby, Empire Theatre Rock Concerts, Pitter Patter 5/10km Run, Rib Fest Zwicks Island, Halloween Safe Streets, Quinte Exhibition



Community Policing

The Belleville Police Service Community Policing Program mission is to promote an enhanced quality of life and a safer community for all people in which to live. Our purpose is to create and maintain a dynamic partnership between the Belleville Police Service and the citizens of Belleville through the sharing of ideas and addressing issues of common concern in order to preserve and enhance the quality of life in our community.

The Community Policing was involved in the following programs; Crime Watch, Project Safety Treat, Kids Fishing Derby, Pitter Patter 5/10km Fun Run, Child Print, Halloween Safe Streets, C.O.P (Citizens On Patrol), Torch Run for Special Olympics, Neighbourhood Watch, Operation lookout, and Volunteer Criminal Record Checks.

Approximately 50 volunteers were responsible for **3247 hours** of dedication to their community in various tasks including the day to day operation of the Community Policing office and running or assisting in the above mentioned programs.

The Belleville Police Service Community Policing Program had a very successful year in 2008 thanks to the dedication of many volunteers and the partnership between Belleville Police Service senior management and uniform patrol officers. The Community Policing Program had an increase in volunteers, increase in financial resources, increase in programs offered to the public and association with other community groups. The Community Policing Program was also involved in the Village of Belleville (downtown core) police survey.

PROJECT "LONGARM"

Totals:

71 Investigations

75 Persons

354 Charges

SEIZURES:

Drugs:

1,331 Marihuana plants	\$1,196,350.00
24,506.62 grams - Marihuana	\$ 239,424.20
6,805.65 grams - Cocaine	\$ 680,565.00
57.7 grams - Cannabis resin	\$ 577.00
75 grams - Psilocybin	\$ 750.00
127 units - Ecstasy	\$ 2,540.00
36 units - Oxycodone	\$ 720.00
67 units - Morphine	\$ 1,340.00
66 units - Clomazepam	\$ 1,320.00
193 units - unknown pills	\$ 0.00

\$2,123,586.20

Cash:

\$167,234.90 **Canadian**

Property:

\$172,400.00 +

Guns:

52 seized

Belleville Police Service Staff 2008

Chief of Police	Stephen Tanner
Deputy Chief of Police	Brian Harder
Inspector(s)	Mike Graham
	Paul Vandegraaf
Executive Support	Nadine Langlois
	Denise Lynch
	Tina Sharpe
Administrative Support	Jodi Holton
	Joanne Zimmerman
Clerical Support	Heather Anderson
	Anne Brennan-Walsh
	Laura Fernandes
	Lorilei Kitchen
	Maureen McCaffrey
	Donna McMechan
	Peg Smyth
Staff Sergeants	Marlene Gray
	Tony MacKinnon
	Al Portt
	Kris Patterson
	Shawn Yuille
Sergeants	Grant Boulay
	Chris Barry
	Kosta Brindakis
	Mike Doucette
	George Farrow
	Julie Forestell
	Peter Goulah
	Beth Harder
	Roy Kendall
	Brad Lentini
	Tom Sweet

Constables			
Mark Abrams	Greg Asimis	Wayne Groen	Jason Marcotte
Scott Anderson	Rene Aubertin	Eric Hadley	Jill McAuley
Fred Armitage	Todd Bennett	Mark Hall	Warren McCann
Greg Asimis	George Bongard	Clint Hamilton	Jennifer McMurter
Rene Aubertin	David Bradley	Mark Harry	Dan McNair
Todd Bennett	Kosta Brindakis	Jeff Holt	Jeff McNevin
George Bongard	Don Bruce	Dan Hounslow	Sheri Meeks
David Bradley	Aaron Bucci	Dan Hoxford	Doug Norman
Kosta Brindakis	Martin Charbonneau	Ian Jarvis	Miranda Orr
Don Bruce	Shawn Code	Dave Johnson	Laura Portt
Aaron Bucci	Pat Comeau	Dan Joly	Teri Smith
Martin Charbonneau	Adam Donaldson	Paul Josefik	Brad Stitt
Shawn Code	Ann Earle	Ron Kanyo	Rob Travers
Pat Comeau	Warren Easby	Pat Kellar	Hans Verbeek
Adam Donaldson	Mike Eby	Anthony Kostuch	Monique Waite
Ann Earle	Darryl Erwin	Barry Lannin	Dave Walsh
Warren Easby	Michael Ferreira	Jeff Ling	Jeff Geen
Mike Eby	Charmaine Fisher	Mike Lockwood	Michael Ferreira
Darryl Erwin	Tim Foster	Jason Marcotte	

Special Constables

**Harry Burley
Brenda Foulkes
Ron. Globe
Ben Lupenette
Roy Matacheskie
Bill Smith**

Civilian Dispatchers

**Karen Barkes
Valerie Brady
Elisha Ferguson
Andrew Fry
Natalie Bonter
Penny Neal-Creelman
Wannietta Thompson
David Warren**

Property Clerk

John Lowry

**Maintenance Support
Coordinator**

Ken Dixon

Custodians

Vern Groom & Robert Semark

In Memory Of
Constable Mike Eby



March 20, 1957 – November 20, 2008

Mike Eby commenced his policing career as a Constable with the Belleville Police Service on February 8, 1988. Mike served in uniform patrol and was a breathalyzer for over 10 years. He found the role of coach officer to be very rewarding for many years. He also worked in the communications centre and as an intake officer. Mike was very proud to be a member of the Emergency Response Team. Mike worked in the Criminal Investigation Bureau for 6 years and had the unique ability to conduct complex fraud investigations, work on street level crime and major sexual assault investigations with the Children's Aid Society. Mike had the ability to empathize with victims of crime, he always put them first while at the same time could assist them through the judicial system. This was so important to Mike, particularly when he worked with children during his time investigating abuse cases with the Children's Aid Society. Mike was involved in his community serving as the school liaison officer for Prince of Wales School; he really enjoyed working with the children and was a proud ambassador for our police service to the school.