

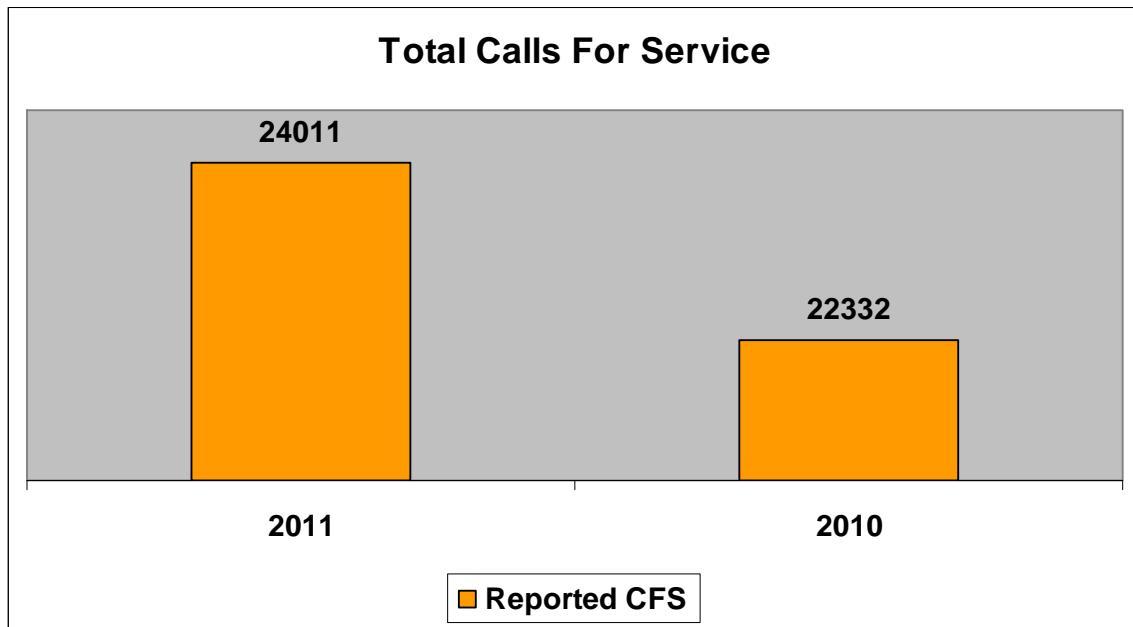


Belleville Police Service

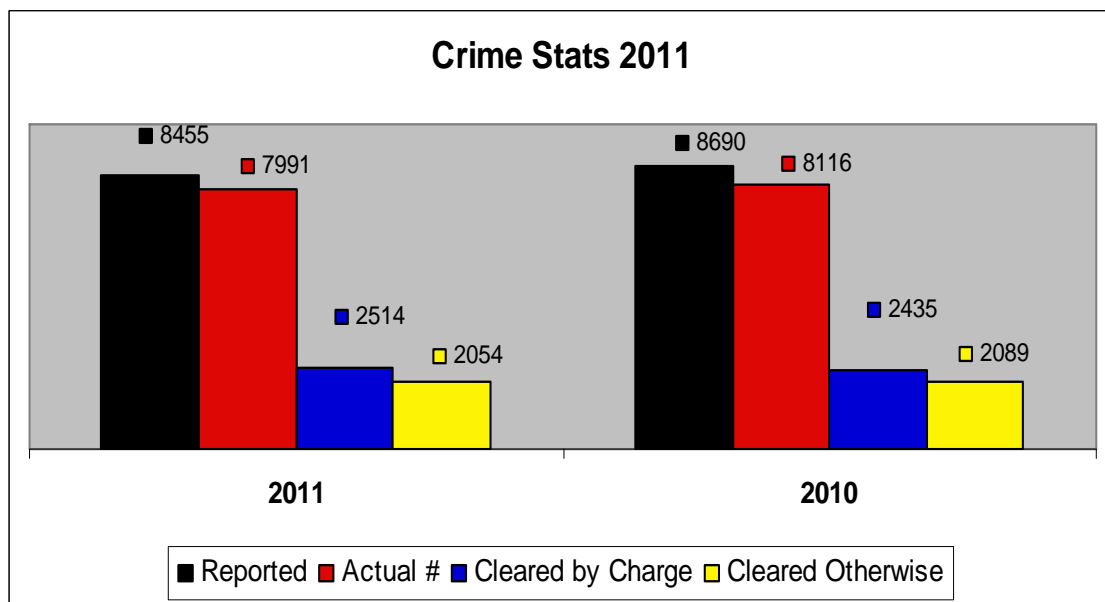
Annual Report Statistics

2011

# Total Calls for Service

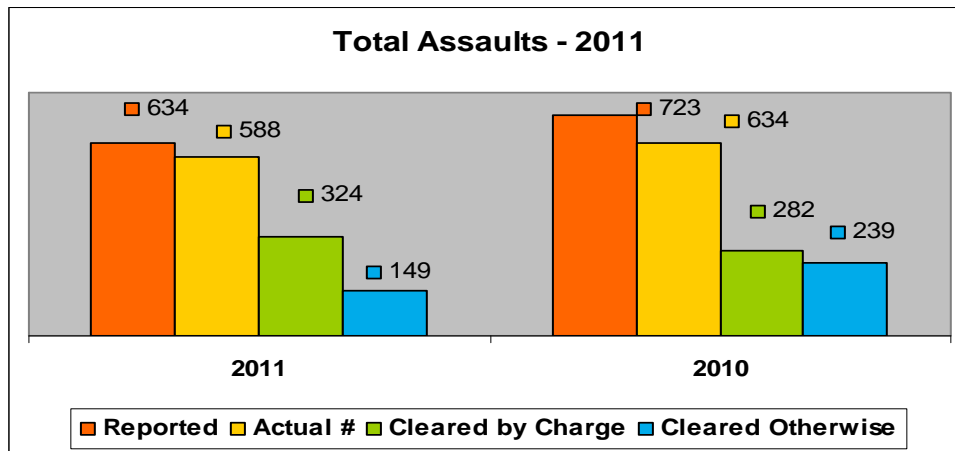


# Crime Stats

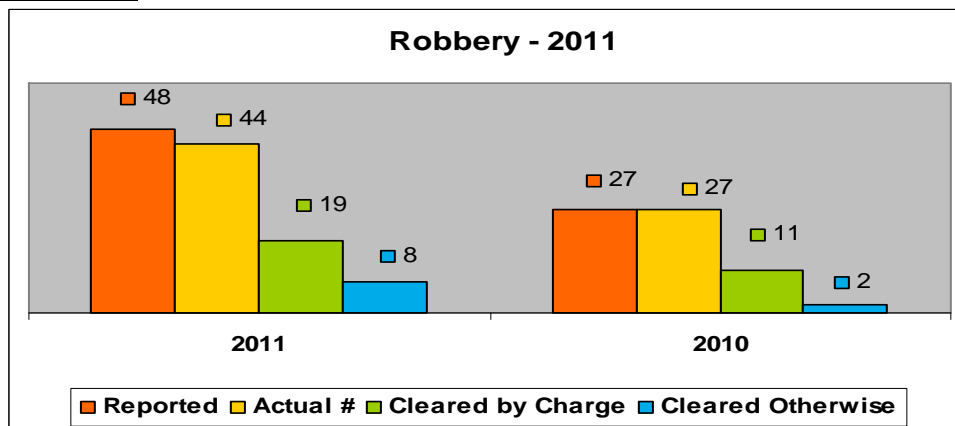


# Specific Crime Stats

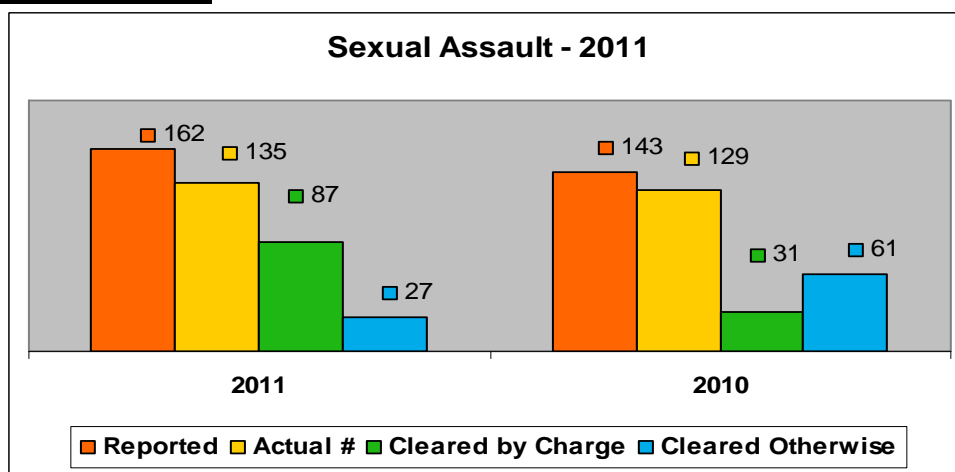
## Assaults



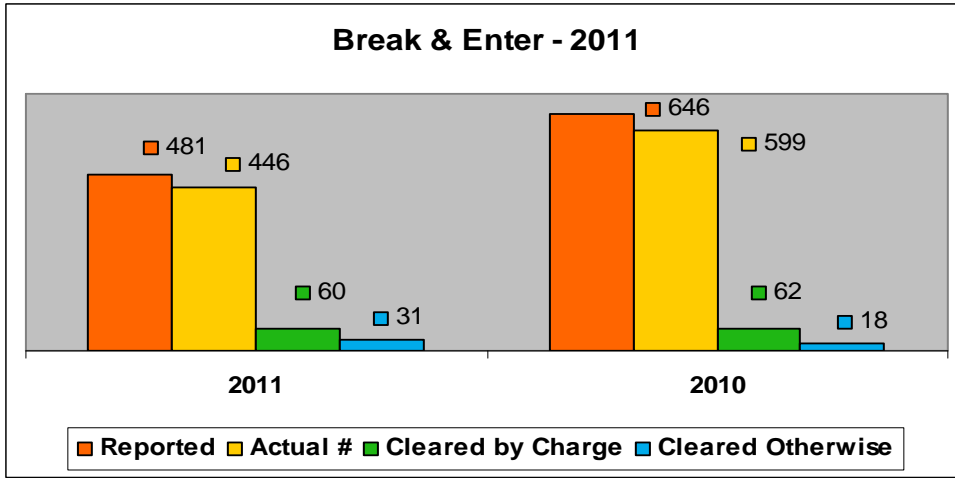
## Robberies



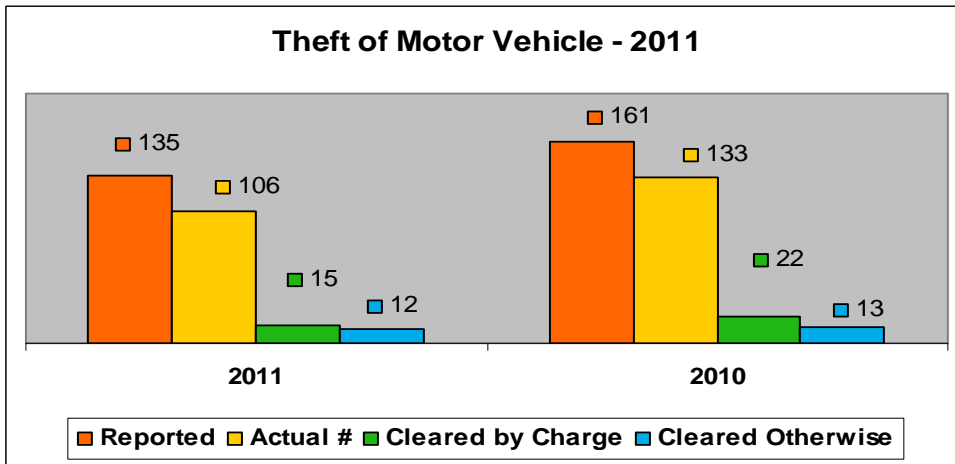
## Sexual Assaults



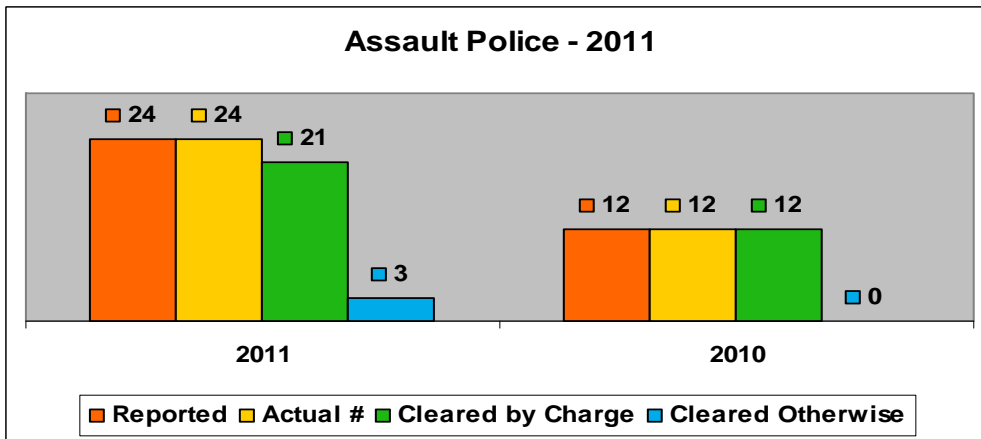
**Break & Enters**



**Theft of Motor Vehicles**



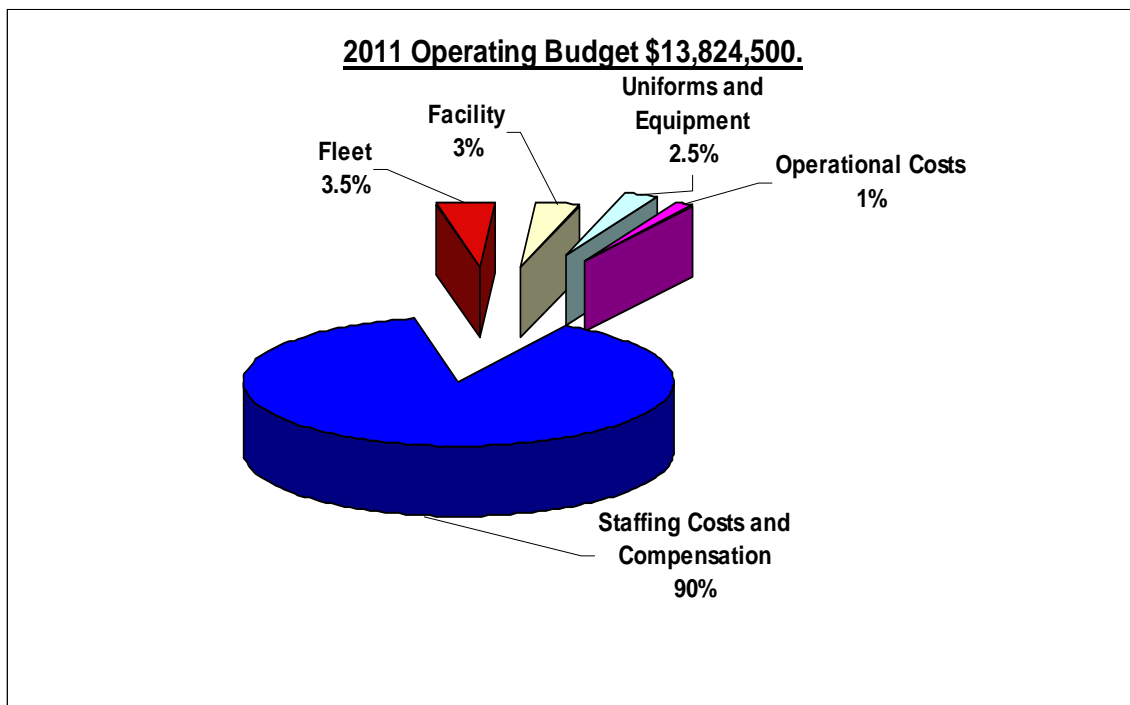
**Assault Police Officer**



## Finance - Total 2011 Operating Budget of \$13,824,500

The following notes have been included in previous Annual Reports:

- Staffing costs and compensation includes all salaries, benefits, pensions, retirement incentives and payouts.
- Fleet includes all vehicle maintenance, repairs, fuel, annual vehicle purchases and leases.
- Facility includes heat, hydro, building insurance, caretaking and maintenance expenses, renovations, repairs and grounds keeping, telephones, computer equipment, records management system.
- Uniforms and equipment includes all uniforms, equipment, ammunition, cleaning and clothing allowances, radio equipment, investigative expenses, radar and breathalyzer supplies.
- Operational costs include all travel and training, prisoners' meals and escorts, professional membership fees, office stationery and supplies, Board and legal expenses.
- In addition, actual revenue for 2011 totaled \$866,508 and included prisoner transportation subsidy, police record checks and insurance reports, grant funding agreements such as Community Policing Partnership, RIDE, Safer Communities, Officer Recruitment Fund, Proceeds of Crime and PAVIS, dispatch fees, by-law licensing fees (Adult Entertainment and Alarms), POA cost offset, paid duty administrative fee,



**2011 Operating Budget \$13,824,500.**

